



Unit 8/2 Carson Road
Malaga WA 6090
P: 08 9248 9994
F: 08 9248 9995
E: sales@couplers.com.au
www.couplers.com.au

SECTION 2: DUCTING

2.1	DUCTING	40-44
	<u>POLYURETHANE</u>	40
	<u>THERMOPLASTIC RUBBER (TPR)</u>	42
	<u>TEXTILE FABRIC</u>	43
	<u>PVC GENERAL PURPOSE</u>	44

POLYURETHANE

PUX - POLYURETHANE (LIGHT & FLEXIBLE)



Suction and discharge of abrasive powders, fumes, vapours and heavy duty industrial abrasive applications. Very light and flexible, most commonly used on CNC machines requiring movement. High resistance to abrasion and bending. UV stabilised, suitable for a wide range of chemicals.

Colour: Translucent with copper-plated steel spiral

Working Temperature: -40 to 90°C



PART NUMBER	ID (mm)	WALL (mm)	BEND (mm)	VACUUM (kpa)	WEIGHT (Kg/m)	MAXIMUM LENGTH (m)
J10-075	76.0	0.40	30	-17	0.38	10
J10-100	102.0	0.40	40	-13	0.50	10
J10-125	127.0	0.50	55	-10	0.56	10
J10-150	152.0	0.50	60	-8	0.94	10
J10-180	180.0	0.50	65	-5	1.25	10
J10-200	203.0	0.50	70	-4	1.40	10
J10-250	254.0	0.50	80	-4	1.90	10
J10-300	305.0	0.50	90	-3	2.26	10
J10-350	356.0	0.50	105	-3	2.72	10

PUR - POLYURETHANE



Suction and discharge of abrasive powders, fumes, shavings, vapours and heavy duty industrial and abrasive use. Heavier duty style with high resistance to abrasion and bending. UV stabilised and suitable for a wide range of chemicals.

Colour: Translucent with copper plated steel spiral

Working Temperature: -40 to 90°C



PART NUMBER	ID (mm)	WALL (mm)	BEND (mm)	VACUUM (kpa)	WEIGHT (Kg/m)	MAXIMUM LENGTH (m)
J18-050	51.0	0.40	40	-20	0.25	10
J18-063	63.0	0.40	55	-17	0.31	10
J18-075	76.0	0.45	65	-17	0.51	10
J18-100	102.0	0.50	85	-13	0.65	10
J18-125	127.0	0.50	105	-10	0.85	10
J18-150	152.0	0.55	125	-8	1.04	10
J18-180	180.0	0.55	150	-5	1.45	10
J18-200	203.0	0.55	165	-4	1.65	10
J18-250	254.0	0.60	210	-4	2.15	10
J18-300	305.0	0.60	250	-3	2.65	10

POLYURETHANE

EOLO PU ANTI-STATIC (SMOOTH BORE)



Smooth bore ducting with a rigid PVC reinforcing which lends itself to a corrugated exterior and reduced flexibility compared with J10 and J18. High resistance to abrasion and bending. UV stabilised, suitable for most chemicals. Suction and discharge of abrasive powders, fumes, vapours and heavy duty industrial and abrasive applications where continuous movement is not required.

Colour: Translucent with ivory spiral and anti-static wire

Working Temperature: -20 to 80°C



PART NUMBER	ID (mm)	WALL (mm)	BEND (mm)	VACUUM (kpa)	WEIGHT (Kg/m)	MAXIMUM LENGTH (m)
J11-038	38.0	0.50	50	-20	0.25	20
J11-050	50.0	0.50	70	-20	0.36	20
J11-063	63.0	0.50	80	-16	0.54	20
J11-075	76.0	0.50	100	-16	0.63	30
J11-080	80.0	0.50	110	-16	0.67	30
J11-100	100.0	0.60	140	-13	0.83	30
J11-125	127.0	0.70	170	-10	1.15	30
J11-150	150.0	0.80	200	-8	1.61	20
J11-200	200.0	0.80	260	-4	2.32	20
J11-250	250.0	0.80	300	-4	3.45	20

EOLO PU (WITHOUT ANTI-STATIC WIRE)

PART NUMBER	ID (mm)	WALL (mm)	BEND (mm)	VACUUM (kpa)	WEIGHT (Kg/m)	MAXIMUM LENGTH (m)
J14-025	25.0	0.40	30	-25	0.15	20
J14-032	32.0	0.40	35	-20	0.18	20
J14-035	35.0	0.50	45	-20	0.20	20
J14-045	45.0	0.50	65	-20	0.27	20
J14-090	90.0	0.60	125	-14	0.75	30
J14-110	110.0	0.60	150	-12	0.95	30
J14-160	160.0	0.80	220	-7	1.94	20
J14-180	180.0	0.80	250	-4	2.14	20
J14-300	300.0	0.80	350	-3	4.10	20

*** In addition to the above, J14 is also available in the same sizes as the J11 but are non stock items that can be supplied on request

THERMOPLASTIC RUBBER (TPR)

2

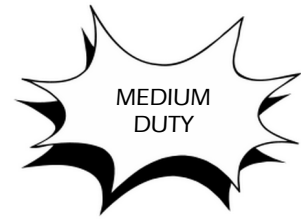
THERMOPLASTIC RUBBER (VULCANO TPR BLACK & GREEN)



Suitable for suction of hot air and fumes and cold air induction in automotive applications. The ducting is comprised of a PP/EPDM blend with a steel wire reinforcement. It is very light and flexible and is extremely resistant to high temperatures and chemicals. Not suitable for abrasive applications.

Colour: Black with green wearstrip

Working Temperature: -40 to 125°C



PART NUMBER	ID (mm)	WALL (mm)	BEND (mm)	VACUUM (kpa)	WEIGHT (Kg/m)	MAXIMUM LENGTH (m)
J16-038	38.0	1.8	30	-3.0	0.17	10
J16-050	51.0	1.8	40	-3.0	0.23	10
J16-063	63.0	1.8	55	-2.5	0.28	10
J16-075	76.0	2.3	65	-2.5	0.46	10
J16-090	90.0	2.3	75	-2.3	0.55	10
J16-100	100.0	2.5	85	-1.9	0.58	10
J16-115	115.0	2.5	100	-1.5	0.68	10
J16-125	127.0	2.9	105	-1.5	0.77	10
J16-150	152.0	2.9	125	-1.2	0.93	10
J16-180	180.0	3.1	150	-0.7	1.31	10
J16-200	203.0	3.1	165	-0.6	1.49	10
J16-230	228.0	3.1	185	-0.6	1.71	10
J16-250	254.0	3.3	200	-0.6	1.80	10
J16-280	278.0	3.3	210	-0.6	1.94	10
J16-300	305.0	3.3	250	-0.4	2.39	10
J16-350	356.0	3.3	300	-0.4	2.79	10



***TPR ducting in black only (no green wearstrip). All above J16 sizes available in plain black on request

PART NUMBER	ID (mm)	WALL (mm)	BEND (mm)	VACUUM (kpa)	WEIGHT (Kg/m)	MAXIMUM LENGTH (m)
J20-080	80.0	2.3	75	-2.5	0.50	10
J20-110	110.0	2.5	90	-1.7	0.62	10
J20-140	140.0	2.9	115	-1.2	0.86	10

TEXTILE FABRIC

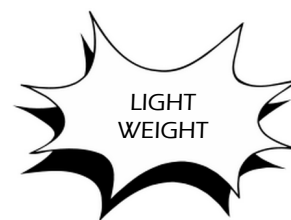
EOLO TR TEXTILE



Suitable for ventilation systems for the suction of smoke, fumes, powders and gas. Textile fabric with a PVC coating, reinforced with a steel helix welded between the two fabric layers. It has a light wall and the ability to compress and perform like a concertina. Flame resistant. Meets European anti-flame standards CL-UL 94 V-O

Colour: Grey

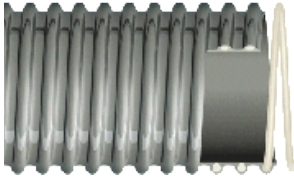
Working Temperature: -20 to 100°C (Maximum 120°C)



PART NUMBER	ID (mm)	WALL (mm)	BEND (mm)	VACUUM (kpa)	WEIGHT (Kg/m)	MAXIMUM LENGTH (m)
J13-050	51.0	N/A	25	N/A	0.14	10
J13-060	60.0	N/A	30	N/A	0.17	10
J13-070	70.0	N/A	35	N/A	0.19	10
J13-075	76.0	N/A	40	N/A	0.20	10
J13-080	80.0	N/A	40	N/A	0.21	10
J13-090	90.0	N/A	45	N/A	0.24	10
J13-100	102.0	N/A	50	N/A	0.28	10
J13-125	127.0	N/A	63	N/A	0.35	10
J13-140	140.0	N/A	70	N/A	0.38	10
J13-150	152.0	N/A	75	N/A	0.41	10
J13-180	180.0	N/A	90	N/A	0.48	10
J13-200	203.0	N/A	100	N/A	0.54	10
J13-250	254.0	N/A	125	N/A	0.85	10
J13-300	305.0	N/A	150	N/A	1.01	10

PVC GENERAL PURPOSE

PVC EOLO GREY GENERAL PURPOSE



Suction of air, fumes and gas. Plasticised PVC ducting with spiral reinforcing. Smooth inside (smaller sizes), and corrugated outside. Very light and flexible. Resistant to most atmospheric agents and chemicals. Not suitable for abrasive or high temperature applications.

Colour: Grey with rigid PVC spiral reinforcing

Working Temperature: -10 to 50°C

PART NUMBER	ID (mm)	WALL (mm)	BEND (mm)	VACUUM (kpa)	WEIGHT (Kg/m)	MAXIMUM LENGTH (m)
J12-020	19.0	2.3	25	-5.7	0.12	20
J12-025	25.0	2.5	32	-5.7	0.16	20
J12-032	32.0	3.0	40	-5.0	0.24	20
J12-038	38.0	3.2	45	-4.2	0.31	20
J12-050	52.0	3.9	60	-4.2	0.50	20
J12-063	63.0	4.1	80	-3.6	0.56	20
J12-075	76.0	4.3	100	-3.6	0.78	20
J12-100	102.0	5.6	155	-3.6	1.28	30
J12-125	127.0	5.8	190	-3.6	1.60	20
J12-150	152.0	6.3	200	-3.0	2.00	20
J12-200	203.0	6.8	240	-2.2	2.70	20